

Mighty Niagara Half Marathon

Lewiston to Youngstown, NY



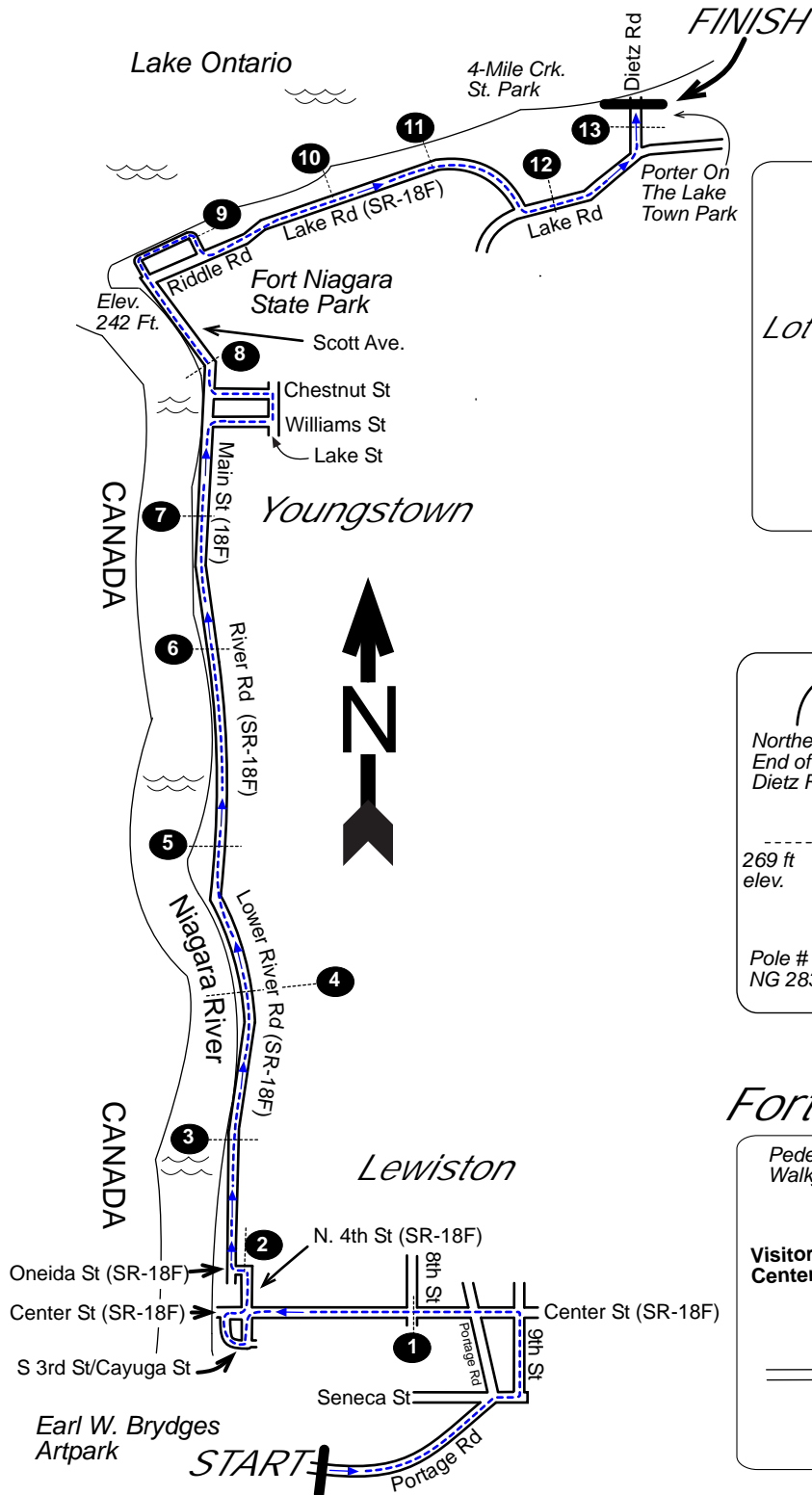
USATF Certificate

NY25015JJ

Effective: 10/02/2025

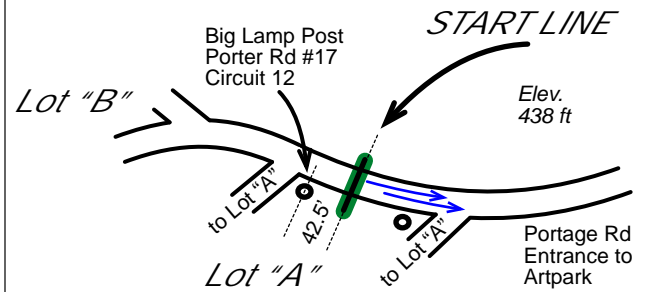
Through: 12/31/2035

Course Distance:	Half Marathon
Date Measured:	September 30, 2025
Measured By:	Jeff John, <i>BuffaloRunners.com</i>
Calibration Course:	NY22022JJ, Fort Niagara State Park
Notes:	This course was measured using the full width of the road and the Shortest Possible Route (SPR).

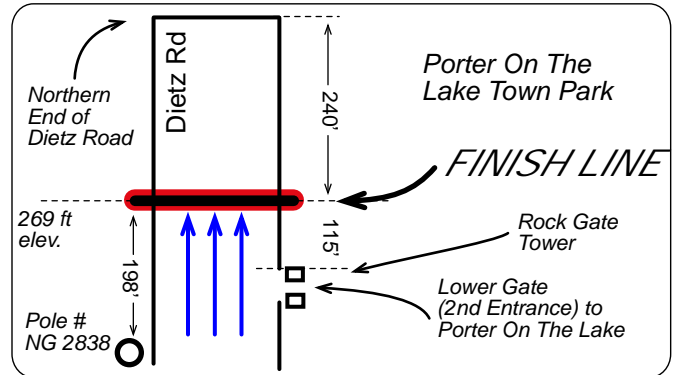


Start Area Detail

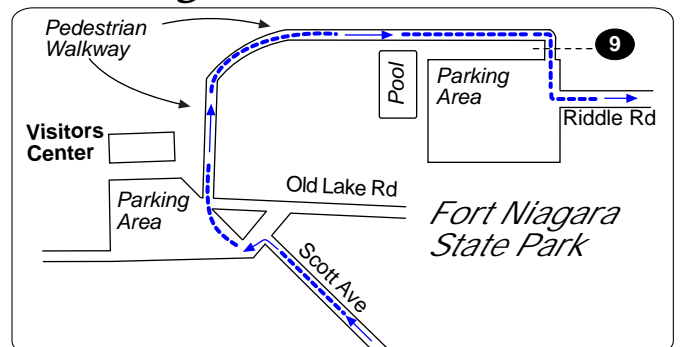
Earl W. Brydges Artpark



Finish Area Detail



Fort Niagara State Park Detail



Mighty Niagara Half Marathon

Start, Finish, 5K, and Mile Splits Locations

<i>Split Location</i>	<i>Details</i>
START	On the Artpark grounds on Portage Rd, between the two entrances to Parking Lot A, and 42' 6" past (east of) lamp pole labeled as "Porter Rd #17 P2 Circuit 12" and at GPS Lat 42.16481 Lon -79.0414 .
1 MILE	Center St (SR-18F) within the intersection with 8th St.
2 MILE	On Oneida St, 15' past (west of) intersection with 3rd St.
3 MILE	4617 SR-18F, and 23' before pole # NG 4613, north of Dutton Dr.
5K	Between properties at 4587 and 4597 SR-18F.
4 MILE	North edge of driveway at 4330 SR-18F, north of Pletcher Rd.
5 MILE	South edge of driveway at 4069 SR-18F, south of Park Rd.
6 MILE	65' before (south of) pole VZ 176, north of Howard Dr.
10K	Between properties at 3699 and 3705 SR-18F, and 15' south of the fire hydrant.
7 MILE	Between 714 and 715 SR-18F, and 30' past (north of) driveway at 715 SR-18F.
8 MILE	South edge of the Fort Niagara State Park 26' south of the Park gate on Scott Rd.
9 MILE	North edge of the Fort Niagara State Park, approaching the parking lot from the concrete path, and 15' before (north of) the Parking lot.
15K	On the northern entrance into the Fort Niagara State Park and 558 feet east of the Park's northern guard houses.
10 MILE	On SR-18F 15 feet before (west of) mailbox at 3049 SR-18F.
11 MILE	On SR-18F at mid driveway of property at 782 SR-18F.
12 MILE	24 feet past (east of) driveway at 964 SR-18F.
20 K	On SR-18F 110 feet past (east of) road into Oakwood Cemetery.
13 MILE	On Dietz Rd, 31' 6" past (north of) pole NG 2892.
FINISH	Dietz Road, 115' north of northern gate post of northern entrance to Porter On The Lake Town Park, and 198' north of pole # NG 2838, and 240' south of end of Dietz Road at the lake.

Date Measured: September 30, 2025